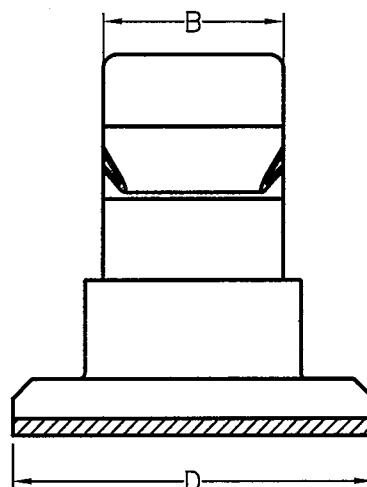
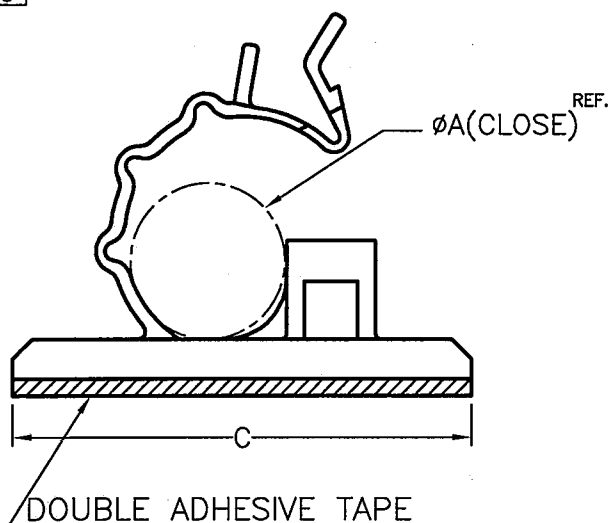


DIM.	TOL
5mm DOWN	±0.2
5~20mm	±0.3
20~40mm	±0.4
40~60mm	±0.5
60~100mm	±0.8
100mm UP	±1.0



PART NO.	ØA	B	C	D	DOUBLE ADHESIVE TAPE
FWC-6(G)	6.2	8.6	17.5	20.5	3M 1600T
FWC-6G(3M)					3M 1690T
FWC-7(G)	7.0	9.8	25.5	17.5	3M 1600T
FWC-7G(3M)					3M 1690T
FWC-10(G)	10.3	12.0	30.3	23.9	3M 1600T
FWC-10G(3M)					3M 1690T
FWC-15(G)	14.5	14.0	29.9	23.9	3M 1600T
FWC-15G(3M)					3M 1690T
FWC-19(G)	18.5	15.9	35.7	25.2	3M 1600T
FWC-19G(3M)					3M 1690T

NOTE:1. IT IS HAND-CUT ADHESIVE TAPE, SO CAN NOT PERFECTLY STICK EVENLY. IT IS POSSIBLE TO HAVE SOME PORTION EXPOSED OR SHRINKING INWARD. THIS IS A NORMAL PHENOMENON.

此為手工背膠，貼附無法非常平整，會有外露或內縮屬正常現象。

2. THE PRODUCT SIZE IS NOT INCLUDED THE SIZES OF ADHESIVE TAPE AND ITS LINER.

產品尺寸皆不含背膠及離型紙。

3. THE COLOR BATCH TEST REPORT IS ONLY FOR FIRST LOT TEST.

色母環保檢測報告，僅提供原始測試報告。

4. SHRINKING IS NORMAL STATUS.

內縮為正常現象。

5. MADE OF EQUIVALENT MATERIAL.

可使用同等材質。

**K**  
ISO 9001  
ISO 14001  
QC 080000  
IATF 16949

康揚企業股份有限公司  
KANG YANG HARDWARE ENTERPRISE CO., LTD.  
康揚塑膠(東莞)有限公司  
KANG YANG PLASTIC(DONG GUAN)CO., LTD.  
康哲電腦配件(吳江)有限公司  
KANG CHE COMPUTER COMPONENTS(WUJIANG)CO., LTD.

PROPRIETARY AND CONFIDENTIAL THE INFORMATION CONTAINED IN THIS DRAWING IS THE SOLE PROPERTY OF KANG YANG HARDWARE ENTERPRISE CO. ANY REPRODUCTION IN PART OR AS A WHOLE WITHOUT THE WRITTEN PERMISSION OF KANG YANG HARDWARE ENTERPRISE CO. IS PROHIBITED.  DO NOT SCALE DRAWING	DATE 2007.12.11	TITLE WIRE MOUNT	DWG. NO. FWC-H(G)		PART NO. SEE ABOVE	
	DRAWN Lung	MATERIAL NYLON 66 UL94V-2				
	CHECKED 林祺翔	COLOR GRAY	FINISH	SIZE A4	SPEC. DWG	REV G
	APPROVED Kang	UNLESS OTHERWISE SPECIFIED TOLERANCE: SEE ABOVE		SCALE: 3:1	UNIT mm	SHEET 1 OF 1