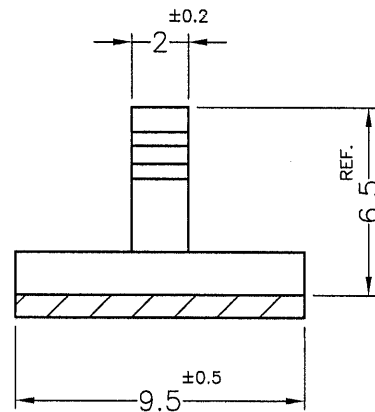
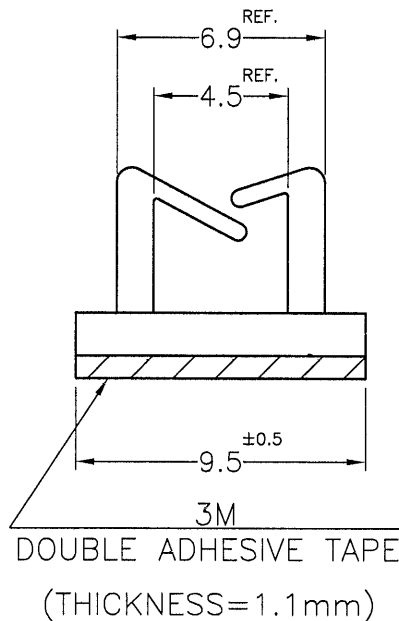


REVISIONS			
REV	DESCRIPTION	DATE	BY



PART NO.	COLOR
WLL-16	NATURAL
WLL-16(B)	BLACK

NOTE: 1. THE PRODUCT SIZE IS NOT INCLUDED THE SIZES OF ADHESIVE TAPE AND ITS LINER.

產品尺寸皆不含背膠及離型紙。

2. IT IS HAND-CUT ADHESIVE TAPE, SO CAN NOT PERFECTLY STICK EVENLY. IT IS POSSIBLE TO HAVE SOME PORTION EXPOSED OR SHRINKING INWARD. THIS IS A NORMAL PHENOMENON.


此為手工背膠,貼附無法非常平整,會有外露或內縮屬正常現象。

3. SHRINKING IS NORMAL STATUS.

內縮為正常現象。

4. MADE OF EQUIVALENT MATERIAL.

均可使用同等材質。

<div><p>康揚企業股份有限公司 KANG YANG HARDWARE ENTERPRISE CO., LTD. 康揚塑膠(東莞)有限公司 KANG YANG PLASTIC(DONG GUAN) CO., LTD. 康哲電腦配件(吳江)有限公司 KANG CHE COMPUTER COMPONENTS(WUJIANG) CO., LTD.</p></div>				TITLE WIRE MOUNT		SPEC. DWG.	
				MATERIAL NYLON 66 UL94V-2		DATE 2015.09.08	
				HARDNESS		DRAWN Y.C.P	
				COLOR SEE ABOVE		CHECK <div>薛梅</div>	
				UNLESS OTHERWISE SPECIFIED TOLERANCE SEE ABOVE		APPROVED <div>Kang</div>	
PART NUMBER SEE ABOVE		DRAWING NUMBER WLL-16					
SIZE A4	SCALE 4:1	UNIT mm	REV C				