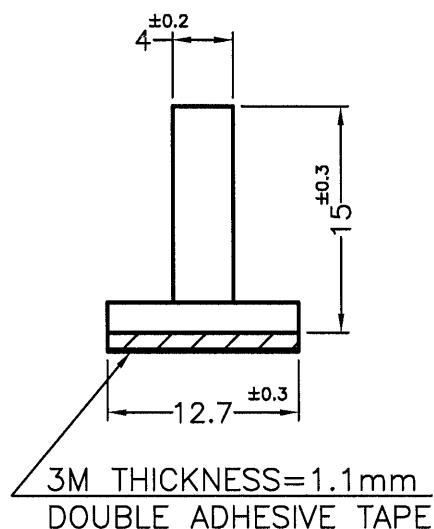
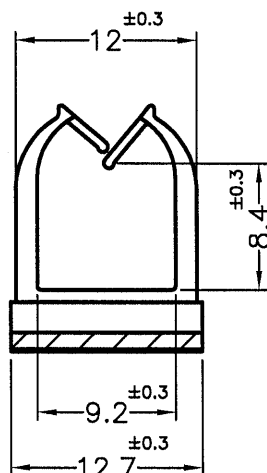


REVISIONS			
REV	DESCRIPTION	DATE	BY



NOTE: 1. THE PRODUCT SIZE IS NOT INCLUDED THE SIZES OF ADHESIVE TAPE AND ITS LINER.

產品尺寸皆不含背膠及離型紙。

2. IT IS HAND-CUT ADHESIVE TAPE, SO CAN NOT PERFECTLY STICK EVENLY. IT IS POSSIBLE TO HAVE SOME PORTION EXPOSED OR SHRINKING INWARD. THIS IS A NORMAL PHENOMENON.



此為手工背膠,貼附無法非常平整,會有外露或內縮屬正常現象。

3. THE PRODUCT SHRINKING IS NORMAL STATUS.

產品內縮為正常現象。

4. MADE OF EQUIVALENT MATERIAL.

均可使用同等材質。

<div><p>康揚企業股份有限公司 KANG YANG HARDWARE ENTERPRISE CO., LTD. 康揚塑膠(東莞)有限公司 KANG YANG PLASTIC(DONG GUAN) CO., LTD. 康哲電腦配件(吳江)有限公司 KANG CHE COMPUTER COMPONENTS(WUJIANG) CO., LTD.</p></div>				TITLE		SPEC. DWG.	
				WIRE MOUNT			
				MATERIAL		DATE	
				NYLON 66 UL94V-2		2017.11.22	
				FINISH		DRAWN	
						L.K.J.	
PART NUMBER		DRAWING NUMBER		COLOR		CHECK	
WLL-23		WLL-23		NATURAL			
SIZE	SCALE	UNIT	REV	UNLESS OTHERWISE SPECIFIED TOLERANCE		APPROVED	
A4	2:1	mm	A	SEE ABOVE		