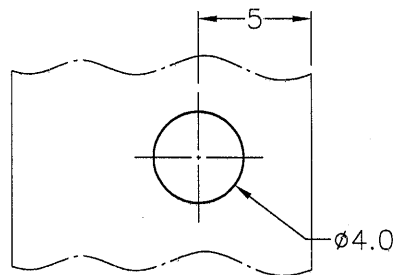
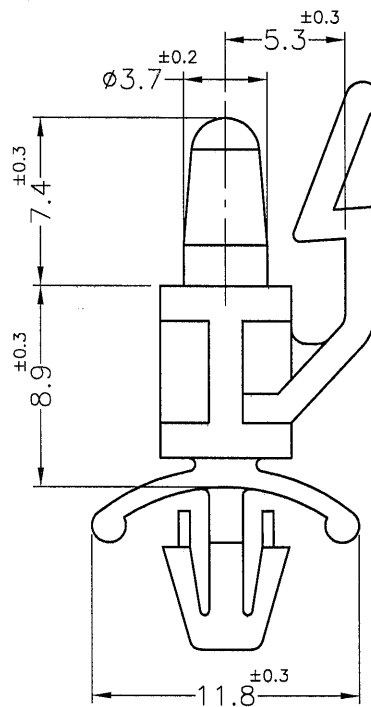
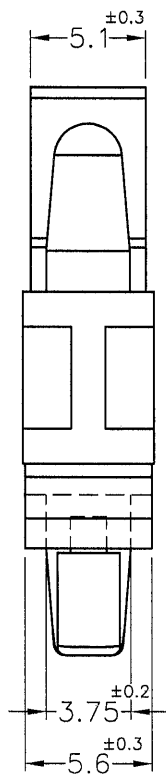


| REVISIONS | | | |
|-----------|-------------|------|----|
| REV | DESCRIPTION | DATE | BY |
| | | | |
| | | | |



MOUNTING HOLE
THICKNESS: 0.8~1.6mm



HOLE IN CHASSIS: $\phi 4.0$ mm
CHASSIS THICKNESS: 0.8~2.0mm

| PART NO. | MATERIAL | COLOR |
|----------|------------------|---------------|
| ULCE-9 | NYLON 66 UL94V-2 | NATURL |
| ULCE-9V0 | NYLON 66 UL94V-0 | NATURL(WHITE) |

NOTE:MADE OF EQUIVALENT MATERIAL.
均可使用同等材質.



康揚企業股份有限公司
KANG YANG HARDWARE ENTERPRISE CO., LTD.
康揚塑膠(東莞)有限公司
KANG YANG PLASTIC(DONG GUAN)CO.,LTD.
康哲電腦配件(吳江)有限公司
KANG CHE COMPUTER COMPONENTS(WUJIANG) CO.,LTD.

| | | |
|--------------------------------------|----------------|--------------------|
| TITLE | SPACER SUPPORT | SPEC. DWG. |
| MATERIAL | SEE ABOVE | DATE 2005.11.04 |
| FINISH | | DRAWN KEN |
| COLOR | SEE ABOVE | CHECK 薛梅 |
| UNLESS OTHERWISE SPECIFIED TOLERANCE | SEE ABOVE | APPROVED |

| | | | |
|--------------------------|--------------|--------------------------|----------|
| PART NUMBER SEE ABOVE | | DRAWING NUMBER ULCE-9 | |
| SIZE A4 | SCALE 3:1 | UNIT mm | REV B |