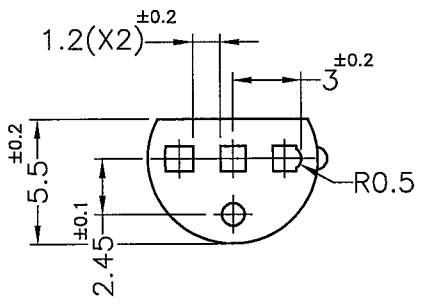


SECTION A-A



NOTE: 1. SHRINKING IS NORMAL STATUS.  
 內縮為正常現象。  
 2. MADE OF EQUIVALENT MATERIAL.  
 均可使用同等材質。

**K**  
 康揚企業股份有限公司  
 KANG YANG HARDWARE ENTERPRISE CO., LTD.  
 康揚塑膠(東莞)有限公司  
 KANG YANG PLASTIC(DONG GUAN)CO.,LTD.  
 康哲電腦配件(吳江)有限公司  
 KANG CHE COMPUTER COMPONENTS(WUJIANG)CO.,LTD.  
 ISO 9001  
 ISO 14001  
 QC 080000  
 IATF 16949

PROPRIETARY AND CONFIDENTIAL THE INFORMATION CONTAINED IN THIS DRAWING IS THE SOLE PROPERTY OF KANG YANG HARDWARE ENTERPRISE CO. ANY REPRODUCTION IN PART OR AS A WHOLE WITHOUT THE WRITTEN PERMISSION OF KANG YANG HARDWARE ENTERPRISE CO. IS PROHIBITED. DO NOT SCALE DRAWING	DATE	2024.02.27	TITLE	LED SPACER SUPPORT		DWG. NO.	LECA-19.5V0		PART NO.	LECA-19.5V0	
	DRAWN	Howl		MATERIAL	NYLON 66 UL94V-0		SIZE	A4		SPEC. DWG	
	CHECKED	Yuping		COLOR	NATURAL(WHITE)		FINISH			REV	A
	APPROVED	Kang		UNLESS OTHERWISE SPECIFIED TOLERANCE:	SEE ABOVE		SCALE:	3:1	UNIT	mm	SHEET 1 OF 1