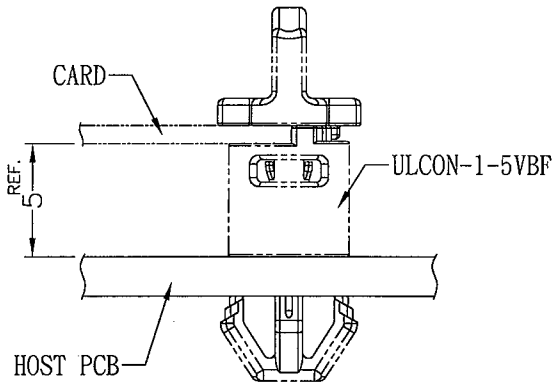
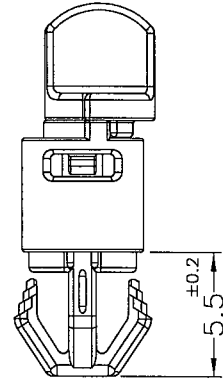
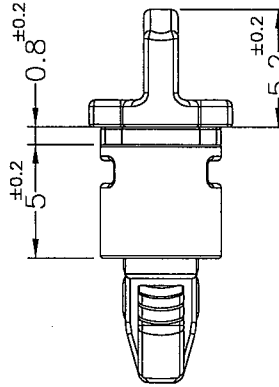
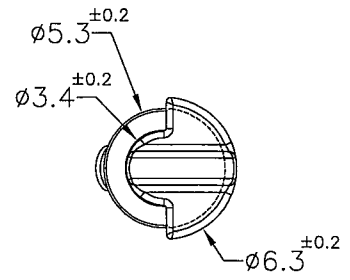
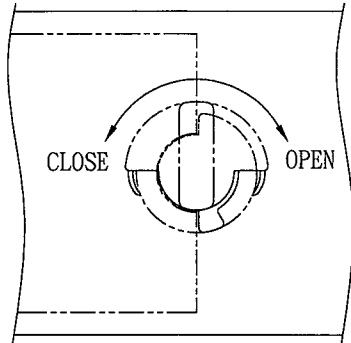
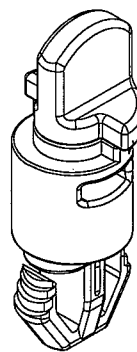


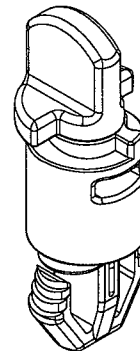
Patented Product
專利產品



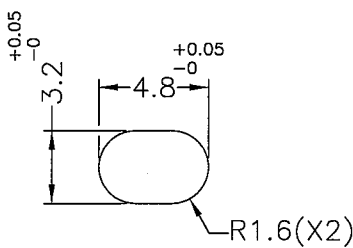
ASSEMBLY DIAGRAM



OPEN



CLOSE



MOUNTING HOLE

THICKNESS: 1.6~2.1mm

(RECOMMEND FOR REFERENCE ONLY)

NOTE: 1. MADE OF PLASTIC OR EQUIVALENT MATERIALS.

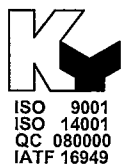
塑膠製品或同等材質。

2. THE COLOR BATCH TEST REPORT IS ONLY FOR FIRST LOT TEST.

色母環保檢測報告, 僅提供原始測試報告。

3. SLIGHT DEFORMED IS NORMAL STATUS.

輕微變形為正常現象。



康揚企業股份有限公司
KANG YANG HARDWARE ENTERPRISE CO., LTD.
康揚塑膠(東莞)有限公司
KANG YANG PLASTIC(DONG GUAN)CO.,LTD.
康哲電腦配件(吳江)有限公司
KANG CHE COMPUTER COMPONENTS(WUJIANG)CO.,LTD.

康揚塑膠五金(泰國)有限公司
บริษัท คัง ยาง ฮาร์ดแวร์ (ไทยแลนด์) จำกัด
KANG YANG HARDWARE (THAILAND) CO., LTD.
康揚越南有限公司
CÔNG TY TNHH KANG YANG VIỆT NAM
KANG YANG VIETNAM CO., LTD.

PROPRIETARY AND CONFIDENTIAL THE INFORMATION CONTAINED IN THIS DRAWING IS THE SOLE PROPERTY OF KANG YANG HARDWARE ENTERPRISE CO. ANY REPRODUCTION IN PART OR AS A WHOLE WITHOUT THE WRITTEN PERMISSION OF KANG YANG HARDWARE ENTERPRISE CO. IS PROHIBITED. DO NOT SCALE DRAWING	DATE	2025.03.21	TITLE	M.2 SPACER	DWG. NO.	ULCON-1-5VBF	PART NO.	ULCON-1-5VBF	
	DRAWN	Howl	LATCH BASE MATERIAL / COLOR	NYLON 66(PA66) UL94V-0 / BLACK	SIZE	A4	SPEC. DWG.	REV	A
	CHECKED	[Signature]	LATCH TURN HANDLE MATERIAL / COLOR	NYLON 66(PA66) UL94V-0+GF / BLACK	SCALE	3:1	UNIT	mm	SHEET 1 OF 1
	APPROVED	[Signature]	UNLESS OTHERWISE SPECIFIED TOLERANCE:	SEE ABOVE					