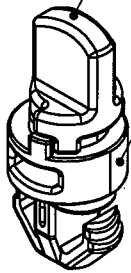
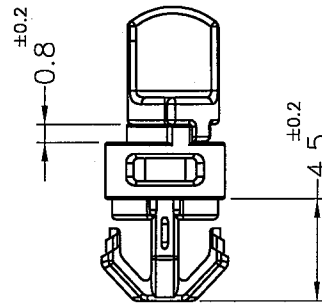
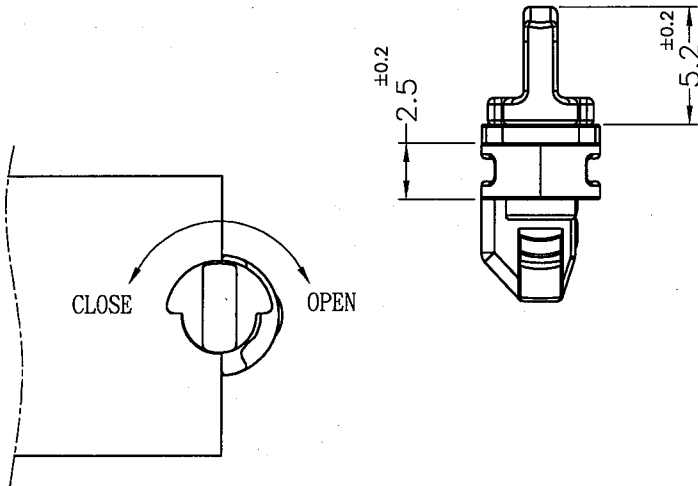
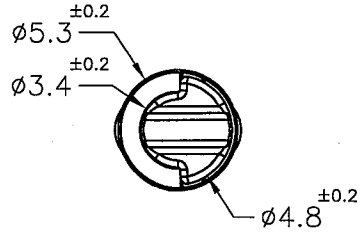


Patented Product  
專利產品

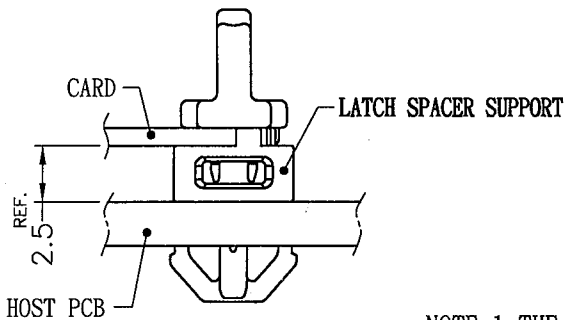
LATCH TURN HANDLE  
NYLON 66 UL94V-0+GF  
GRAY(PANTONE 429C)



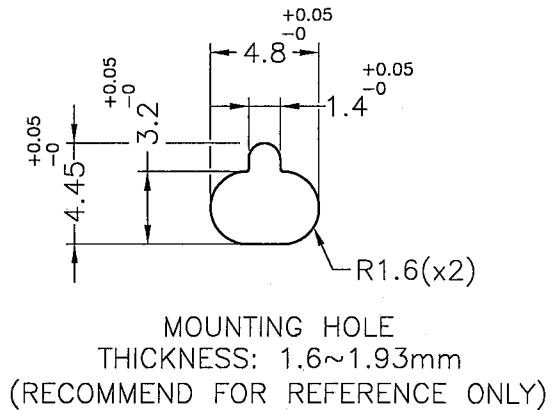
LATCH BASE  
NYLON 66 UL94V-0  
BLACK



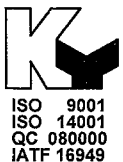
CLOSE OPEN



ASSEMBLY DIAGRAM



- NOTE: 1. THE COLOR BATCH TEST REPORT IS ONLY FOR FIRST LOT TEST.  
色母環保檢測報告, 僅提供原始測試報告。  
2. SHRINKING IS NORMAL STATUS.  
內縮為正常現象。  
3. SLIGHT DEFORMED IS NORMAL STATUS.  
輕微變形為正常現象。



康揚企業股份有限公司  
KANG YANG HARDWARE ENTERPRISE CO., LTD.  
康揚塑膠(東莞)有限公司  
KANG YANG PLASTIC(DONG GUAN)CO.,LTD.  
康哲電腦配件(吳江)有限公司  
KANG CHE COMPUTER COMPONENTS(WUJIANG)CO.,LTD.

康揚塑膠五金(泰國)有限公司  
บริษัท คัง หยาง ฮาร์ดแวร์ (ไทยแลนด์) จำกัด  
KANG YANG HARDWARE (THAILAND) CO., LTD.  
康揚越南有限公司  
CÔNG TY TNHH KANG YANG VIỆT NAM  
KANG YANG VIETNAM CO., LTD.

PROPRIETARY AND CONFIDENTIAL THE INFORMATION CONTAINED IN THIS DRAWING IS THE SOLE PROPERTY OF KANG YANG HARDWARE ENTERPRISE CO. ANY REPRODUCTION IN PART OR AS A WHOLE WITHOUT THE WRITTEN PERMISSION OF KANG YANG HARDWARE ENTERPRISE CO. IS PROHIBITED.  DO NOT SCALE DRAWING	DATE	2024.01.18	TITLE	LATCH SPACER SUPPORT	DWG. NO.	ULCON-7V0F	PART NO.	ULCON-7VGF
	DRAWN	C.S.L	MATERIAL	SEE ABOVE	SIZE	A4	SPEC. DWG.	REV
	CHECKED	Yuping	COLOR	SEE ABOVE	FINISH			A
	APPROVED	Kang	UNLESS OTHERWISE SPECIFIED TOLERANCE:	SEE ABOVE	SCALE:	3:1	UNIT	mm